

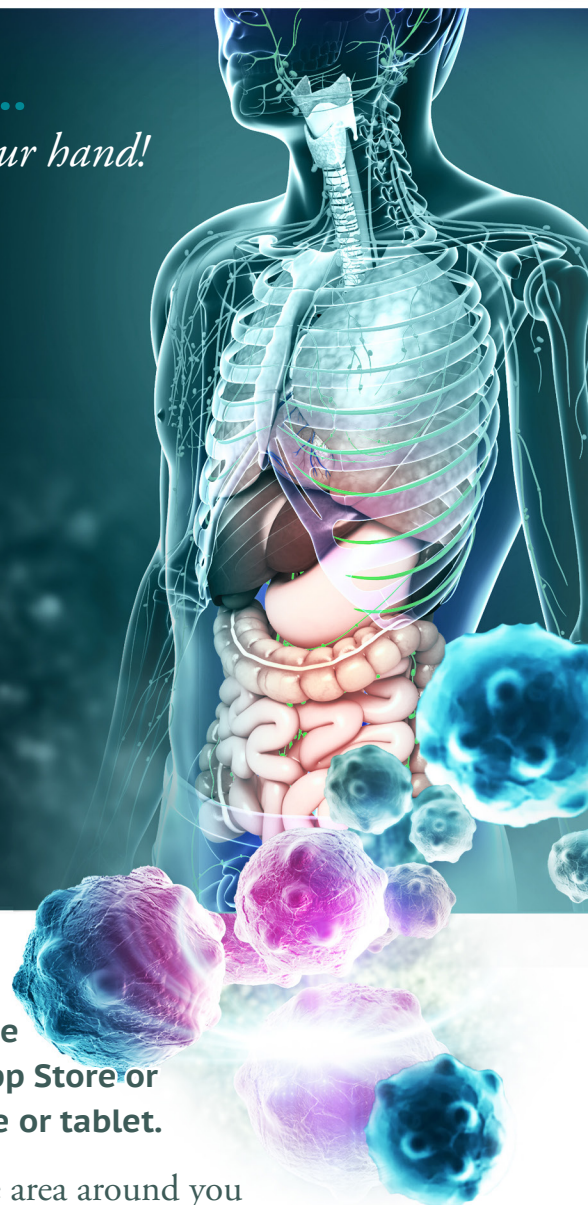
Immunotherapy and Immune-Related Adverse Events: HOW DOES IT AFFECT ME?

WELCOME TO AUGMENTED REALITY...

a tour in the palm of your hand!

This augmented reality application was designed using images and animations to highlight aspects of immunotherapy and its role in the treatment of cancer. Specifically, the video focuses on immune-related adverse events (IRAEs), which can occur when these therapies turn on the immune system to fight cancer. This tool will take you through the various therapies available; identification, types, grading and management of IRAEs; and ways in which the patient can become more involved.

The images and animations that are brought to reality can be manipulated and controlled by YOU, allowing you to focus on specific areas and be truly engaged in the learning tool.



To use this augmented reality application, please download the **“IRAE-AR”** app from the Apple App Store or Google Play Store on your phone or tablet.

- Press the start button, and slowly move your device to scan the area around you
- Once a flat surface has been found, you will see a marker appear
- Move your device to reposition the marker, and tap the screen when you are ready to begin
- Try rotating your device to landscape mode for a wider view